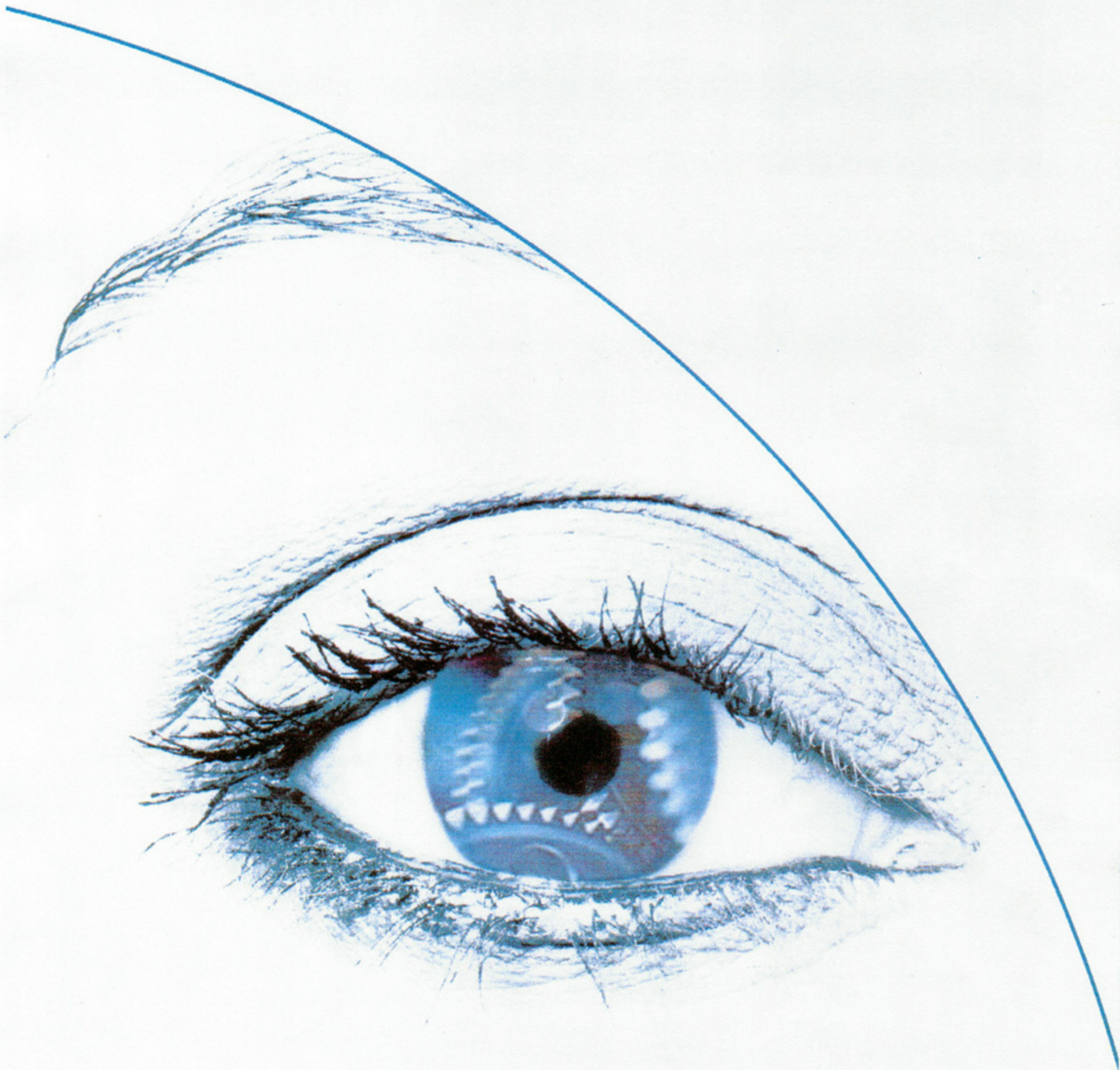




Special Gear Units
Drive Elements



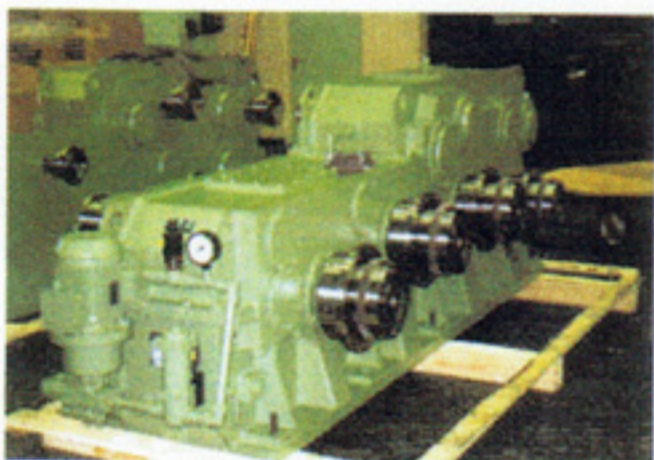
... we get the things moving!



Spur-gear drive for a hot-rolling mill

Weight: 6,500 kg

P=400 kW



Spur-gear drive for stretch-forming and straightening plant

Weight: 6,600 kg

P ges. = 820 kW



Bevel and spur-gear transmission for paper winder

Weight: 950 kg

P = 90 kW



Spur-gear change-speed transmission for balancing plant during assembly

Weight: 14,000 kg

P = 8,000 kW, $n_{max} = 4,500 \text{ min}^{-1}$

Production

About us ...

Products

Our experience

Decades of experience, our technical competence, and our precise knowledge of the varied problems that confront our customers, combined with use of the latest technologies and methods of calculation provide the basis for our outstanding quality.

Our service

Made-to-measure solutions to your drive problems. Designing for real, practical applications ensures robust, reliable and economical products.

**Absolutely punctual deliveries.
Perfectly organised service.**

Product range

Special gear units
High-speed gear units
Plant components
Gears and related parts
Conversions
Installation and assembly
Repairs
Provision of labour

Primary markets

Steel industry
Machine builders
Paper industry
Plant engineering
Testing and automation industry
Conveyor systems
Plastics industry



Spur-gear transmission for balancing plant during trials

Weight: 1,800 kg

P = 1,500 kW, $n_{max} = 30,000 \text{ min}^{-1}$



Spur-gear change-speed transmission for a test stand

Weight = 3,000 kg

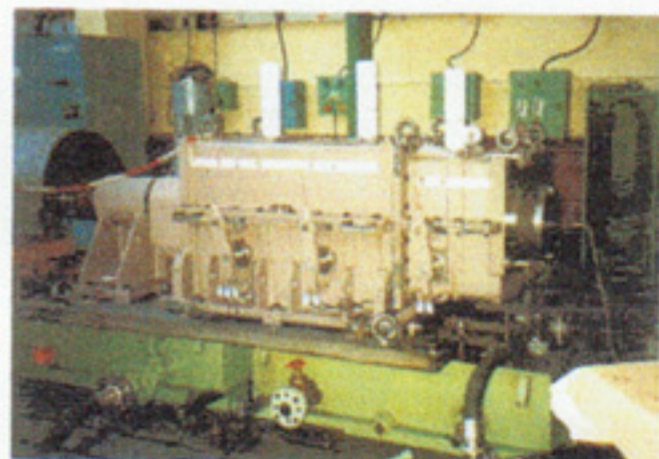
P = 500 kW, $n_{max} = 20,000 \text{ min}^{-1}$



Spur-gear transmission for a test stand

Weight: 2,000 kg

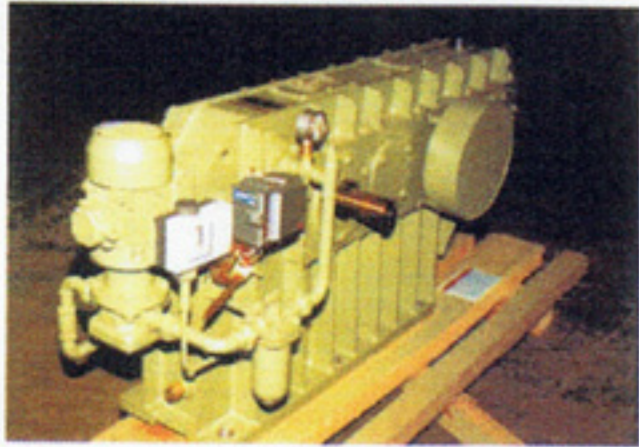
P = 400 kW, $n_{max} = 18,000 \text{ min}^{-1}$



Spur-gear change-speed transmission for a centrifuge

Weight: 7,000 kg

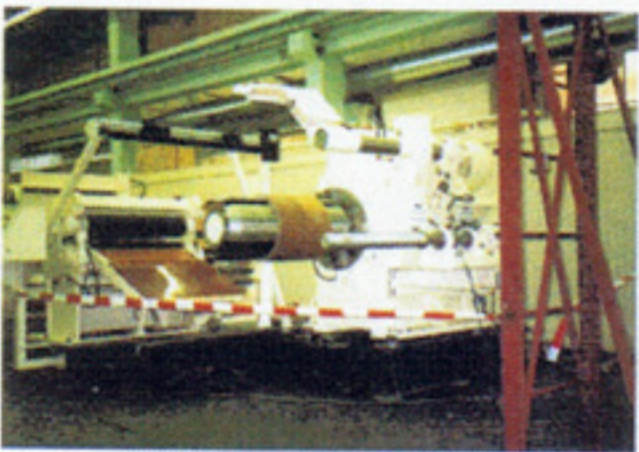
P = 1,000 kW, $n_{max} = 23,000 \text{ min}^{-1}$



Spur-gear transmission for a test stand

Weight: 1,500 kg

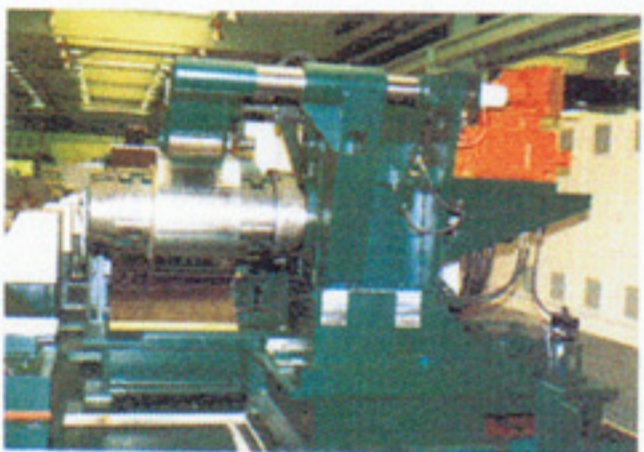
P = 200 kW, $n_{max} = 3,500 \text{ min}^{-1}$



Winder for steel sheet

Weight: 12,000 kg

P = 250 kW



Winder for steel sheet

Weight: 6,500 kg

P = 125 kW



Drive for a shearing machine

Weight: 4,000 kg

P = 2 x 250 kW

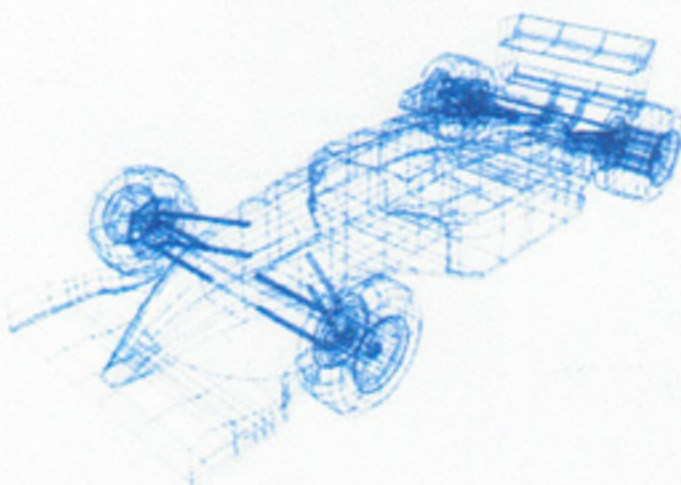


Spur-gear transmission for a
briquetting machine during
assembly

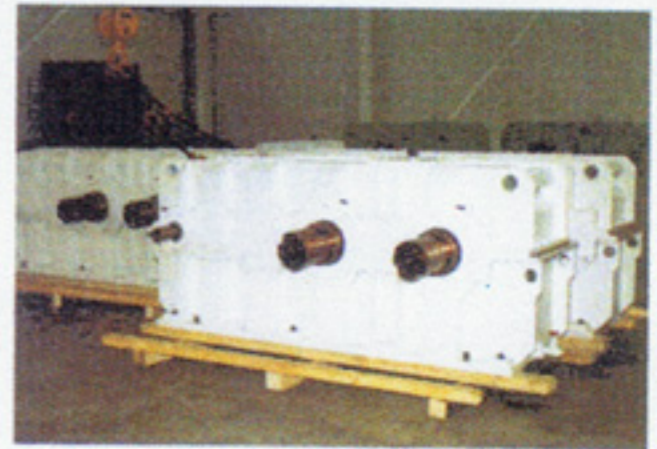
Weight: 7,500 kg

P = 350 kW

These photographs show a selection of our products. With our modern planning methods and highly qualified employees we can, at any time, conceive and manufacture individual solutions specially for you. Contact us. We will be pleased to advise you.



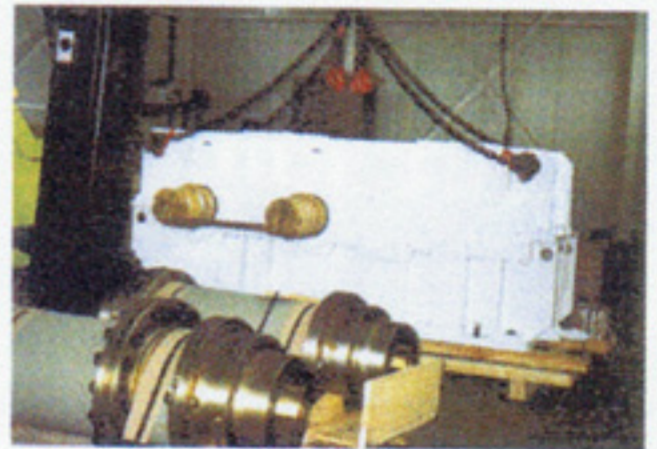
GTS - POWER



Spur-gear transmission for a
briquetting machine

Weight: 7,500 kg each

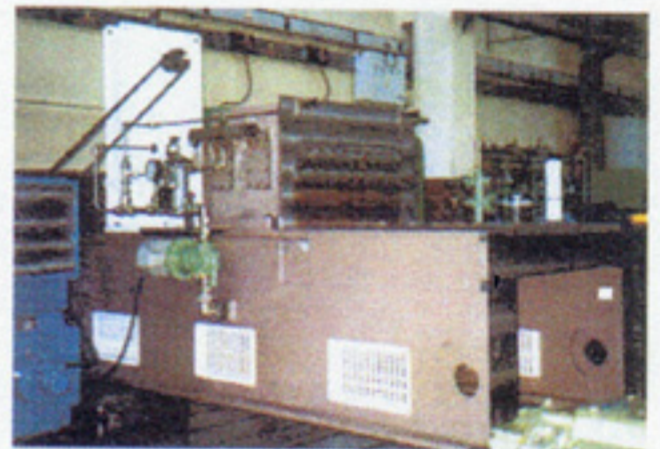
P = 350 kW



Spur-gear transmission for a
briquetting machine

Weight: 8,300 kg

P = 400 kW



Drive for a steel-sheet straightening machine
during a test run

Weight: 7,000 kg

P = 280 kW



Drive for a steel-sheet straightening machine
during a test run

Weight: 28,000 kg

P = 320 kW



Spur- gear transmission for a steel-sheet
straightening machine during a test run

Weight: 12,500 kg

P = 250 kW



Special Gear Units
Drive Elements



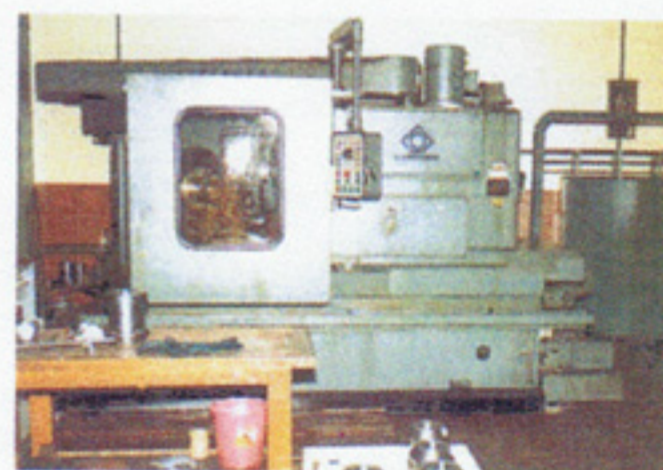
Company headquarters



CAD design



CNC grinding machine



Machine for cutting bevel gears



Gear measuring machine

GTS Antriebstechnik GmbH

Industriegebiet

Breitlerstrasse 70

D-55566 Bad Sobernheim

Telephone: 06751/9314-0

Telefax: 06751/931424 + 25

Email: gts-antriebstechnik@t-online.de

www.gts-antriebstechnik.de